

WhisperRoom[®]

2025 PRODUCT CATALOG



TABLE OF **CONTENTS**

WHY WHISPERROOM?	3
SOUND BOOTH MODELS	4-15
BOOTH PACKAGES	16-23
BASIC FEATURES	24-25
OPTIONS & ACCESSORIES	26-31
USES	32
ASSEMBLY EXAMPLE	33
WARRANTY & INFO	34

INDUSTRY LEADING
NOISE REDUCTION



EASY
ASSEMBLY



PREMIUM
CONSTRUCTION



MODULAR
DESIGN



FAST
SHIPPING



SOUND BOOTH MODELS

Our 26 sound booth models are available in **Standard (Single-Wall)** and **Enhanced (Double-Wall)** designs to meet various sound isolation needs.



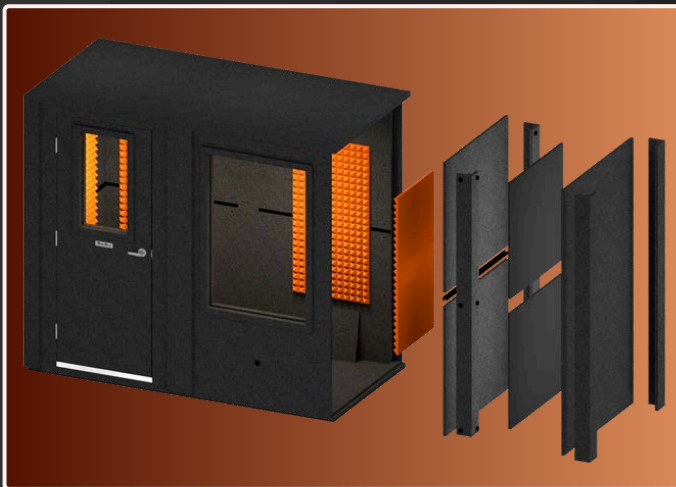
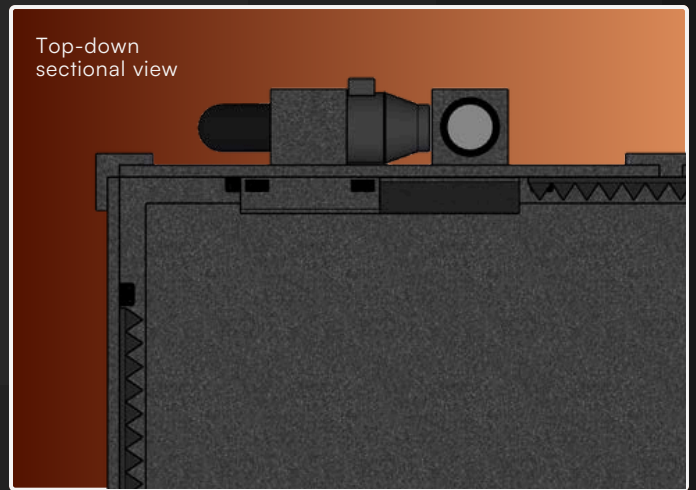
TWO LEVELS OF ISOLATION



STANDARD (SINGLE-WALL)

Our single-wall isolation booths provide excellent noise reduction for spaces where moderate sound isolation is needed.

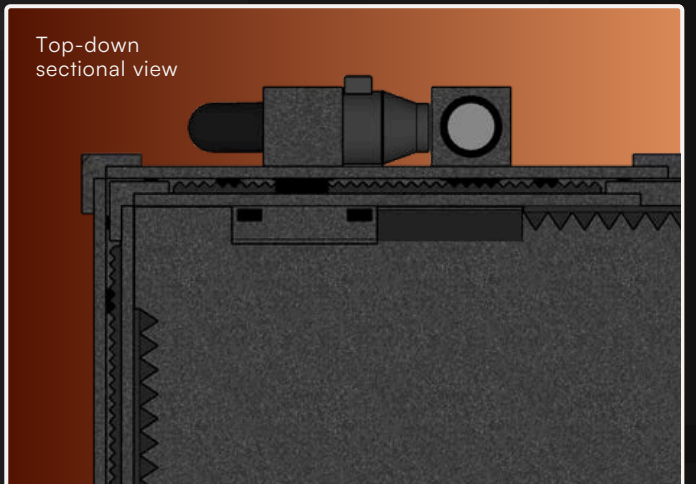
- Reliable isolation for **general sound isolation**
- **Budget-friendly** with effective noise reduction
- Easily **upgrades** to Enhanced



ENHANCED (DOUBLE-WALL)

For maximum sound isolation, our double-wall booths offer superior noise reduction for high-demand environments.

- Optimized for **noisy and demanding spaces**
- Advanced **double-wall** design
- Decoupled walls and **air gap** for noise control





MDL 127 LP

MODEL TYPES:

- Standard:** 5' 5" x 4' 6" x 6' 11" (709 lbs) **\$6,635**
- Enhanced:** 5' 5" x 4' 6" x 7' 1" (1228 lbs) **\$10,920**

BASIC FEATURES:

- door window (12" x 30")
- ventilation system (1)
- acoustical foam sheets (x2)
- cable passages (x4)
- 18" LED light (1)



MDL 4230

MODEL TYPES:

- Standard:** 3' 8" x 2' 8" x 6' 11" (485 lbs) **\$5,545**
- Enhanced:** 3' 8" x 2' 8" x 7' 1" (805 lbs) **\$8,895**

BASIC FEATURES:

- door window (12" x 30")
- ventilation system (1)
- acoustical foam sheets (x2)
- cable passages (x2)
- 18" LED light (1)



MDL 4242

MODEL TYPES:

- Standard:** 3' 8" x 3' 8" x 6' 11" (555 lbs) **\$5,595**
- Enhanced:** 3' 8" x 3' 8" x 7' 1" (935 lbs) **\$8,995**

BASIC FEATURES:

- door window (12" x 30")
- ventilation system (1)
- acoustical foam sheets (x2)
- cable passages (x2)
- 18" LED light (1)



MDL 4260

MODEL TYPES:

Standard: 3' 8" x 5' 8" x 6' 11" (685 lbs) **\$6,695**
Enhanced: 3' 8" x 5' 8" x 7' 1" (1205 lbs) **\$11,595**

BASIC FEATURES:

- door window (12" x 30")
- ventilation system (1)
- acoustical foam sheets (x3)
- cable passages (x2)
- 18" LED light (1)



MDL 4284

MODEL TYPES:

Standard: 3' 8" x 7' 2" x 6' 11" (875 lbs) **\$8,850**
Enhanced: 3' 8" x 7' 2" x 7' 1" (1510 lbs) **\$14,445**

BASIC FEATURES:

- door window (12" x 30")
- ventilation system (x2)
- acoustical foam sheets (x4)
- cable passages (x4)
- 18" LED light (1)



MDL 4848

MODEL TYPES:

Standard: 4' 2" x 4' 2" x 6' 11" (680lbs) **\$5,995**
Enhanced: 4' 2" x 4' 2" x 7' 1" (1170 lbs) **\$9,995**

BASIC FEATURES:

- door window (16" x 30")
- ventilation system (1)
- acoustical foam sheets (x3)
- cable passages (x2)
- 18" LED light (1)



MDL 4872

MODEL TYPES:

Standard: 4' 2" x 6' 2" x 6' 11" (880 lbs) **\$7,395**
Enhanced: 4' 2" x 6' 2" x 7' 1" (1540 lbs) **\$12,595**

BASIC FEATURES:

- door window (16" x 30")
- ventilation system (1)
- acoustical foam sheets (x4)
- cable passages (x2)
- 18" LED light (1)



MDL 4896

MODEL TYPES:

Standard: 4' 2" x 8' 2" x 6' 11" (1021 lbs) **\$9,350**
Enhanced: 4' 2" x 8' 2" x 7' 1" (1750 lbs) **\$15,725**

BASIC FEATURES:

- door window (16" x 30")
- ventilation system (x2)
- acoustical foam sheets (x4)
- cable passages (x4)
- 18" LED light (1)



MDL 6060

MODEL TYPES:

Standard: 5' 2" x 5' 2" x 6' 11" (890 lbs) **\$9,405**
Enhanced: 5' 2" x 5' 2" x 7' 1" (1555 lbs) **\$16,200**

BASIC FEATURES:

- door window (12" x 30")
- ventilation system (x2)
- acoustical foam sheets (x4)
- cable passages (x4)
- 18" LED light (1)



MDL 6084

MODEL TYPES:

Standard: 5' 2" x 7' 2" x 6' 11" (1050 lbs) **\$10,445**
Enhanced: 5' 2" x 7' 2" x 7' 1" (1845 lbs) **\$17,670**

BASIC FEATURES:

- door window (12" x 30")
- ventilation system (x2)
- acoustical foam sheets (x4)
- cable passages (x4)
- 18" LED light (x2)



MDL 7272

MODEL TYPES:

Standard: 6' 2" x 6' 2" x 6' 11" (1175 lbs) **\$10,690**
Enhanced: 6' 2" x 6' 2" x 7' 1" (2015 lbs) **\$18,285**

BASIC FEATURES:

- door window (16" x 30")
- ventilation system (x2)
- acoustical foam sheets (x4)
- cable passages (x4)
- 18" LED light (1)



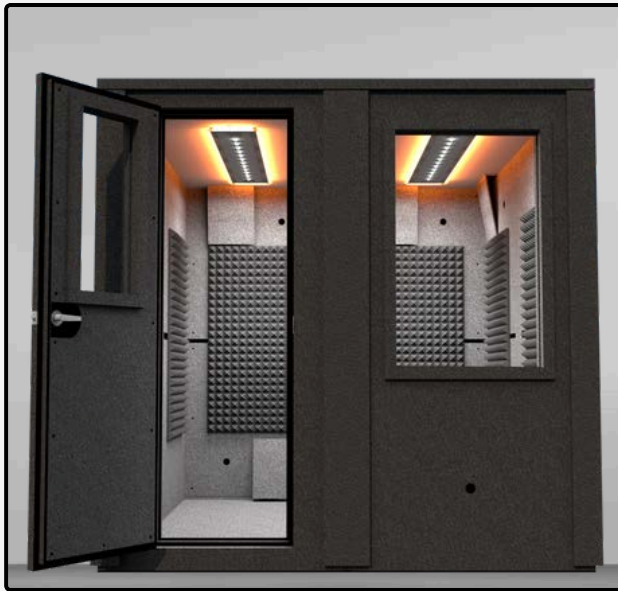
MDL 7296

MODEL TYPES:

Standard: 6' 2" x 8' 2" x 6' 11" (1345 lbs) **\$11,515**
Enhanced: 6' 2" x 8' 2" x 7' 1" (2330 lbs) **\$19,800**

BASIC FEATURES:

- door window (16" x 30")
- ventilation system (x2)
- acoustical foam sheets (x5)
- cable passages (x4)
- 18" LED light (1)



MDL 8484

MODEL TYPES:

- Standard:** 7' 2" x 7' 2" x 6' 11" (1300 lbs) **\$12,700**
- Enhanced:** 7' 2" x 7' 2" x 7' 1" (2240 lbs) **\$20,710**

BASIC FEATURES:

- door window (12" x 30")
- ventilation system (x3)
- acoustical foam sheets (x5)
- cable passages (x6)
- 18" LED light (x2)



MDL 84102

MODEL TYPES:

- Standard:** 7' 2" x 8' 8" x 6' 11" (1490 lbs) **\$14,395**
- Enhanced:** 7' 2" x 8' 8" x 7' 1" (2585 lbs) **\$23,710**

BASIC FEATURES:

- door window (12" x 30")
- ventilation system (x3)
- acoustical foam sheets (x6)
- cable passages (x6)
- 18" LED light (x2)



MDL 84126

MODEL TYPES:

- Standard:** 7' 2" x 10' 8" x 6' 11" (1725 lbs) **\$16,265**
- Enhanced:** 7' 2" x 10' 8" x 7' 1" (2965 lbs) **\$26,270**

BASIC FEATURES:

- door window (12" x 30")
- ventilation system (x4)
- acoustical foam sheets (x6)
- cable passages (x8)
- 18" LED light (x2)



MDL 9696

MODEL TYPES:

Standard: 8' 2" x 8' 2" x 6' 11" (1541 lbs) **\$13,750**
Enhanced: 8' 2" x 8' 2" x 7' 1" (2635 lbs) **\$23,070**

BASIC FEATURES:

- door window (16" x 30")
- ventilation system (x3)
- acoustical foam sheets (x7)
- cable passages (x6)
- 18" LED light (x2)



MDL 96120

MODEL TYPES:

Standard: 8' 2" x 10' 2" x 6' 11" (1798 lbs) **\$15,910**
Enhanced: 8' 2" x 10' 2" x 7' 1" (3100 lbs) **\$27,820**

BASIC FEATURES:

- door window (16" x 30")
- ventilation system (x3)
- acoustical foam sheets (x7)
- cable passages (x6)
- 18" LED light (x2)



MDL 96144

MODEL TYPES:

Standard: 8' 2" x 12' 2" x 6' 11" (2053 lbs) **\$17,740**
Enhanced: 7' 2" x 12' 2" x 7' 1" (3514 lbs) **\$29,475**

BASIC FEATURES:

- door window (16" x 30")
- ventilation system (x4)
- acoustical foam sheets (x8)
- cable passages (x8)
- 18" LED light (x2)



MDL 96168

MODEL TYPES:

Standard: 8' 2" x 14' 2" x 6' 11" (2309 lbs) **\$19,770**
Enhanced: 8' 2" x 14' 2" x 7' 1" (3969 lbs) **\$34,015**

BASIC FEATURES:

- door window (16" x 30")
- ventilation system (x4)
- acoustical foam sheets (x9)
- cable passages (x8)
- 18" LED light (x2)



MDL 96192

MODEL TYPES:

Standard: 8' 2" x 16' 2" x 6' 11" (2561 lbs) **\$21,010**
Enhanced: 8' 2" x 16' 2" x 7' 1" (4386 lbs) **\$36,005**

BASIC FEATURES:

- door window (16" x 30")
- ventilation system (x4)
- acoustical foam sheets (x9)
- cable passages (x8)
- 18" LED light (x2)



MDL 10284

MODEL TYPES:

Standard: 8' 8" x 7' 2" x 6' 11" (1475 lbs) **\$13,865**
Enhanced: 8' 8" x 7' 2" x 7' 1" (2590 lbs) **\$23,335**

BASIC FEATURES:

- door window (12" x 30")
- ventilation system (x3)
- acoustical foam sheets (x6)
- cable passages (x6)
- 18" LED light (x2)



MDL 102102

MODEL TYPES:

- Standard:** 8' 8" x 8' 8" x 6' 11" (1690lbs) **\$15,510**
- Enhanced:** 8' 8" x 8' 8" x 7' 1" (2985 lbs) **\$27,375**

BASIC FEATURES:

- door window (12" x 30")
- ventilation system (x3)
- acoustical foam sheets (x7)
- cable passages (x6)
- 18" LED light (x2)



MDL 102126

MODEL TYPES:

- Standard:** 8' 8" x 10' 8" x 6' 11" (1945 lbs) **\$17,585**
- Enhanced:** 8' 8" x 10' 8" x 7' 1" (3400 lbs) **\$30,535**

BASIC FEATURES:

- door window (12" x 30")
- ventilation system (x4)
- acoustical foam sheets (x7)
- cable passages (x8)
- 18" LED light (x2)



MDL 102144

MODEL TYPES:

- Standard:** 8' 8" x 12' 2" x 6' 11" (2155 lbs) **\$19,235**
- Enhanced:** 8' 8" x 12' 2" x 7' 1" (3795 lbs) **\$33,520**

BASIC FEATURES:

- door window (12" x 30")
- ventilation system (x4)
- acoustical foam sheets (x8)
- cable passages (x8)
- 18" LED light (x2)



MDL 102168

MODEL TYPES:

Standard: 8' 8" x 14' 2" x 6' 11" (2415 lbs) **\$20,730**

Enhanced: 8' 8" x 14' 2" x 7' 1" (4210 lbs) **\$35,595**

BASIC FEATURES:

- door window (12" x 30")
- ventilation system (x4)
- acoustical foam sheets (x9)
- cable passages (x8)
- 18" LED light (x2)



MDL 102186

MODEL TYPES:

Standard: 8' 8" x 15' 8" x 6' 11" (2625 lbs) **\$22,375**

Enhanced: 8' 8" x 15' 8" x 7' 1" (4605 lbs) **\$39,640**

BASIC FEATURES:

- door window (12" x 30")
- ventilation system (x4)
- acoustical foam sheets (x9)
- cable passages (x8)
- 18" LED light (x2)

IMPORTANT DETAILS

MODEL DIAGRAMS

- Sound booth model diagrams show optional wall windows and studio lights.
- All diagrams feature Enhanced (double-wall) models unless specifically noted.

MODEL TYPES

- Standard = Single-Wall Isolation
- Enhanced = Double-Wall Isolation

MODULAR DESIGN

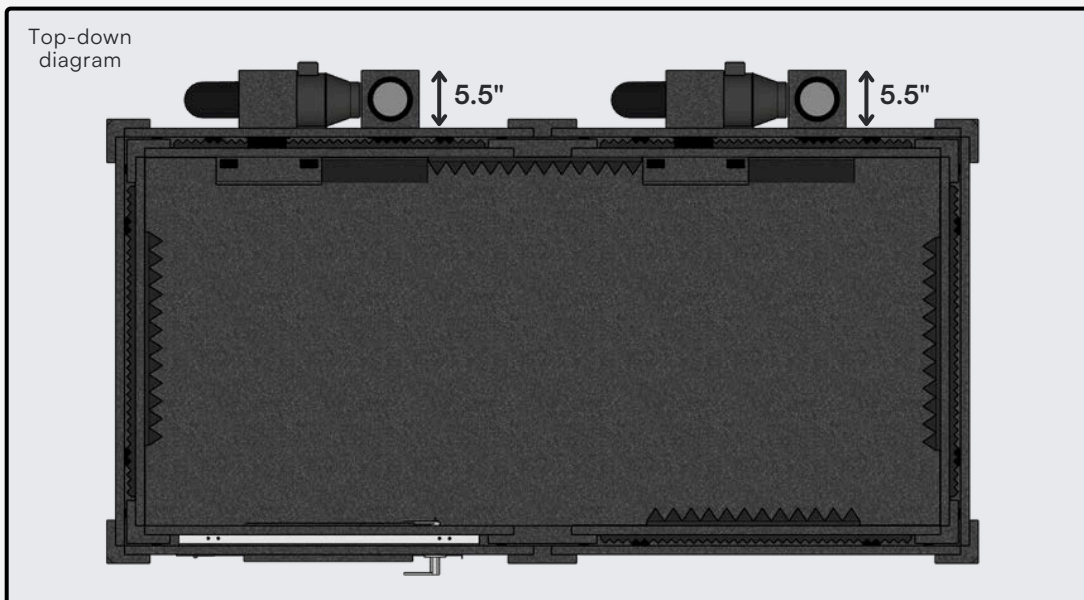
- Components like doors, windows, and vent walls can be repositioned for user preference.
- Doors available with left- or right-hand hinge configurations.

WEIGHTS & PRICING

- Assembled weights are listed. Options & Accessories will increase weight.
- Shipping costs not included—contact us for a personalized quote.

VENTILATION PROTRUSION

- Ventilation systems add 5.5" to exterior dimensions; some models have multiple vent configurations.



BOOTH PACKAGES

Our **7 pre-configured booth packages** are designed to meet various needs, offering convenience, versatility, and **cost savings**—perfect for your space and use.



VOICE OVER BASIC PACKAGE

Standard (Single-Wall)

Dependable sound isolation for **home studios** and versatile **voiceover work**.



PACKAGE FEATURES:

- door window (16" x 30")
- ventilation systems (1)
- acoustical foam sheets (x3)
- cable passages (x2)
- ventilation silencing system
- exterior fan silencer
- office desk
- studio light
- LENRD bass traps (x2)
- acoustic package

SPECS:

- **Standard:** single-wall
- 4' 2" x 4' 2" x 6' 11"
- (796 lbs)



Customizable Sound: Adjustable panels, bass traps, and foam.



Efficient Workflow: Includes a desk and studio lights.



Quick Setup: Interchangeable components for easy assembly.

MDL 4848 S:	\$5,995
ventilation silencing system:	\$645
exterior fan silencer:	\$250
office desk:	\$299
studio light:	\$325
LENRD bass traps (x2):	\$120
acoustic package:	\$372

Total before discount: \$8,006

5% package discount applied: **\$7,605.70**

*shipping price not included

VOICE OVER DELUXE PACKAGE

Enhanced (Double-Wall)

Superior sound isolation for **professional voiceover** work in **challenging** environments.



PACKAGE FEATURES:

- door window (16" x 30")
- ventilation systems (1)
- acoustical foam sheets (x3)
- cable passages (x2)
- ventilation silencing system
- exterior fan silencer
- office desk
- studio light
- LENRD bass traps (x2)
- acoustic package

SPECS:

- **Enhanced:** double-wall
- 4' 2" x 4' 2" x 7' 1"
- (1287 lbs)



Customizable Sound: Adjustable panels, bass traps, and foam.



Efficient Workflow: Includes a desk and studio lights.



Quick Setup: Interchangeable components for easy assembly.

MDL 4848 E:	\$9,995
ventilation silencing system:	\$645
exterior fan silencer:	\$250
office desk:	\$299
studio light:	\$325
LENRD bass traps (x2):	\$120
acoustic package:	\$372

Total before discount: \$12,006

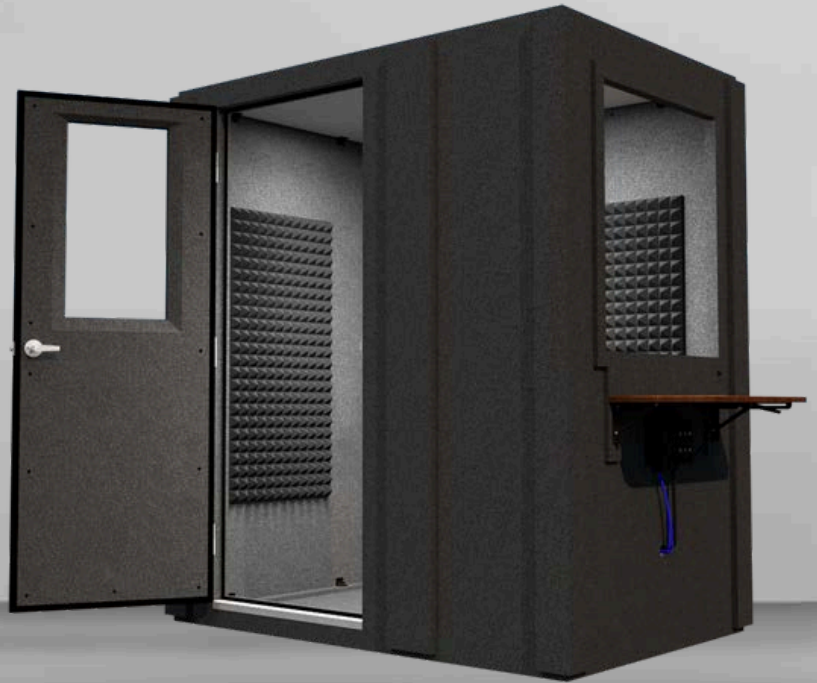
5% package discount applied: **\$11,405.70**

*shipping price not included

AUDIOLOGY BASIC PACKAGE

Standard (Single-Wall)

Reliable sound isolation for **precise audiometric testing.**



PACKAGE FEATURES:

- door window (16" x 30")
- ventilation systems (1)
- acoustical foam sheets (x3)
- cable passages (x3)
- ventilation silencing system (1)
- exterior fan silencer (1)
- multi jack panel
- standard window (32" x 36")
- office desk

SPECS:

- **Standard:** single-wall
- 4' 2" x 6' 2" x 6' 11"
- (1018 lbs)



Easy Integration: Multi jack panel to connect medical equipment.



Clear Visibility: Large window for direct patient interaction.



Controlled Environment: Reduce noise for diagnostic accuracy.

MDL 4872 S:	\$7,395
multi jack panel:	\$795
standard window (32" x36"):	\$720
office desk:	\$299
exterior fan silencer:	\$250
ventilation silencing system:	\$645

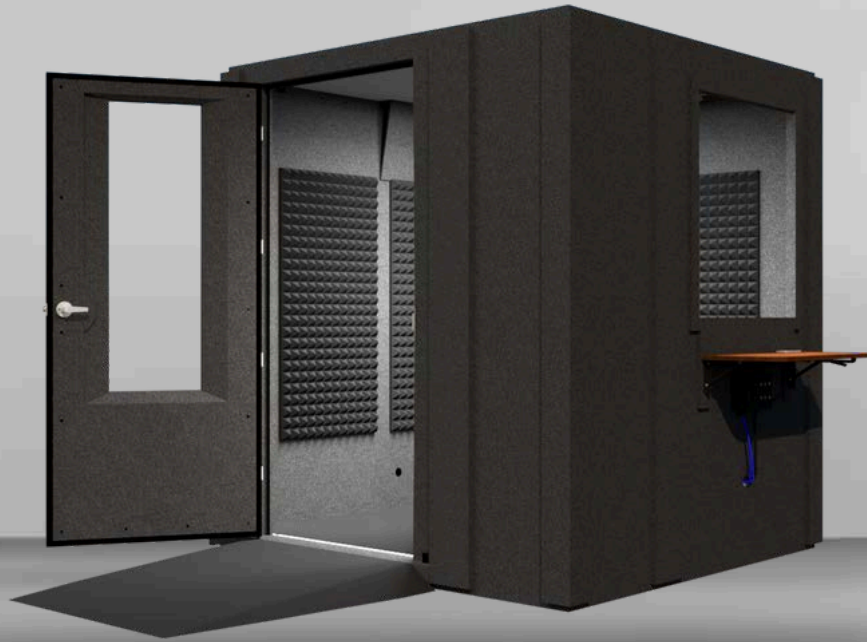
Total before discount:	\$10,104
5% package discount applied:	\$9,598.80

*shipping price not included

AUDIOLOGY DELUXE PACKAGE

Standard (Single-Wall)

Accessible sound isolation for audiometric testing with **ADA-compliant** features.



PACKAGE FEATURES:

- door window (16" x 48")
- ventilation systems (2)
- acoustical foam sheets (x4)
- cable passages (x5)
- ventilation silencing system (x2)
- exterior fan silencer (x2)
- multi jack panel
- ADA package
- office desk

SPECS:

- **Standard**: single-wall
- 6' 2" x 6' 2" x 6' 11"
- (1698 lbs)



Easy Integration: Multi jack panel to connect medical equipment.



Clear Visibility: Large window for direct patient interaction.



Accessible Design: ADA-compliant design provide comfort for all patients

MDL 7272 S:	\$10,690
ADA package:	\$2,545
multi jack panel:	\$795
standard window (32" x36"):	\$720
office desk:	\$299
exterior fan silencer:	\$500
ventilation silencing system:	\$1,290

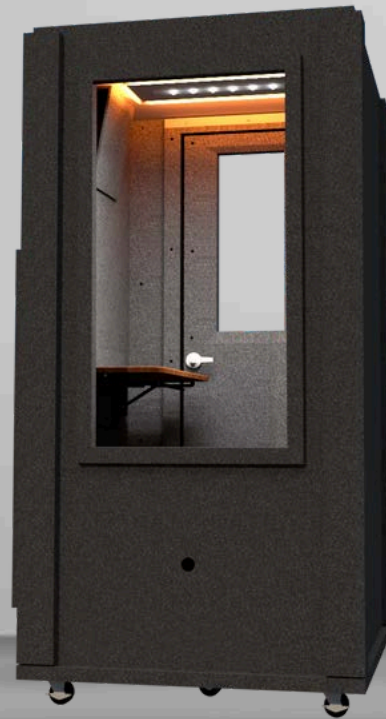
Total before discount:	\$16,839
5% package discount applied:	\$15,997.05

*shipping price not included

OFFICE BOOTH

Standard (Single-Wall)

Privacy for **calls and meetings** in a mobile workspace.



PACKAGE FEATURES:

- door window (12" x 30")
- ventilation systems (1)
- acoustical foam sheets (x2)
- cable passages (x3)
- standard window (26" x 48")
- caster plate
- office desk
- studio light



Quiet Conversations: Privacy for calls and video meetings.



Easy Mobility: Simple to move with the rolling caster plate.



Functional Design: Includes a large window, desk, and adjustable lighting.

SPECS:

- **Standard:** single-wall
- 3' 8" x 3' 8" x 7' 4"
- (710 lbs)

MDL 4242 S:	\$5,595
standard window (26" x 48"):	\$775
caster plate:	\$580
office desk:	\$299
studio light:	\$325
Total before discount:	\$7,574
5% package discount applied:	\$7,195.30

*shipping price not included

WORK FROM HOME BOOTH

Standard (Single-Wall)

Dedicated space to **stay focused** and minimize distractions while **working remotely**.



PACKAGE FEATURES:

- door window (16" x 30")
- ventilation systems (1)
- acoustical foam sheets (x4)
- cable passages (x2)
- office desk
- studio light



Quiet Workspace: Minimize interruptions for focused work.



Personal Privacy: block distractions and visual interruptions.



Functional Design: Includes a foldable desk, and adjustable lighting.

SPECS:

- **Standard:** single-wall
- 4' 2" x 6' 2" x 6' 11"
- (895 lbs)

MDL 4872 S:	\$7,395
office desk:	\$299
studio light:	\$325
Total before discount:	\$8,019
5% package discount applied:	\$7,618.05

*shipping price not included

DRUM BOOTH PACKAGE

Enhanced (Double-Wall)

Powerful sound isolation **for drummers** practicing **or recording** at full volume.



PACKAGE FEATURES:

- door window (16" x 30")
- ventilation systems (x3)
- acoustical foam sheets (x7)
- cable passages (x6)
- studio lights (x2 - 52")
- acoustic package
- LENRD bass traps (x8)



Customizable Sound: Adjustable panels, bass traps, and foam.



Spacious Design: Space for drumkit or other musical gear.



Quick Setup: Interchangeable components for easy assembly.

SPECS:

- **Enhanced:** double-wall
- 8' 2" x 8' 2" x 7' 1"
- (2903 lbs)

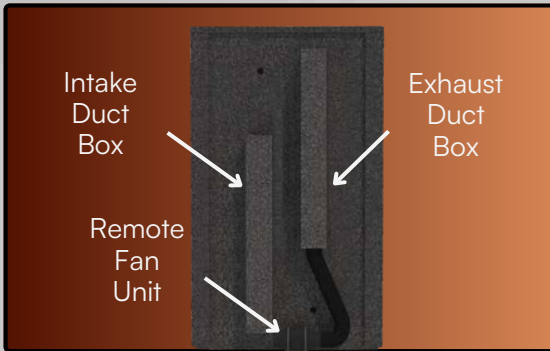
MDL 9696 E:	\$23,070
studio lights:	\$830
acoustic package:	\$668
LENRD bass traps (x8):	\$480
<hr/>	
Total before discount:	\$25,048
5% package discount applied:	\$23,795.60

*shipping price not included

BASIC FEATURES

Every WhisperRoom **includes essentials** for optimal sound isolation and versatility.





VENTILATION SYSTEM

Enjoy quiet air circulation with a 10-speed fan, noise-reducing baffles, and vibration-free ducts. Fresh air flows in at the floor and out at the ceiling for optimal comfort.



DOOR WINDOW

Features double-pane, 1/4" laminated safety glass that helps reduce noise, prevent sound transfer, and resist shattering while offering clear visibility into the booth.



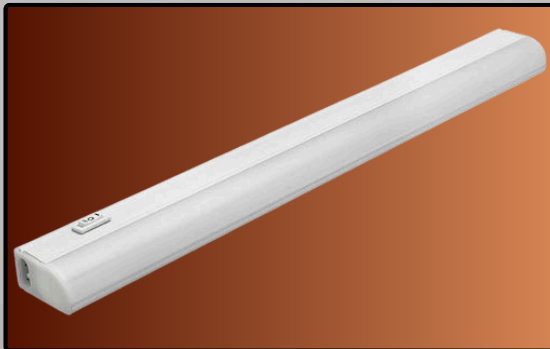
CABLE PASSAGES

Slotted rubber plugs make it easy to add or remove cables—simply remove the plug, insert the cables, and secure the plug back in place.



AURALEX STUDIOFOAM

2' x 4' acoustic foam sheets with pre-attached Velcro® are easy to install and effectively reduce standing waves and flutter echoes. Add or remove foam to customize booth acoustics.



18" LED LIGHT

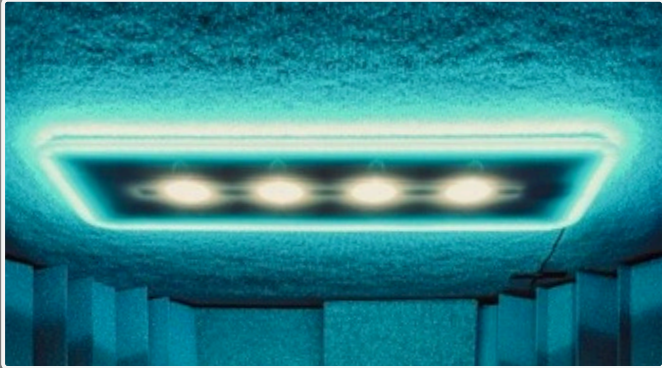
Offers three color temperatures (2700K, 3000K, 4000K) with high/low/off settings.

OPTIONS & ACCESSORIES

Customize your WhisperRoom with **upgrades** and **add-ons** designed to improve comfort, functionality, and performance.



INTERIOR UPGRADES



STUDIO LIGHT

Bright LED pucks and multicolored LEDs offer customizable, silent, and heat-free mood lighting. Available in 29" and 52" sizes with adjustable settings and a remote for easy control.

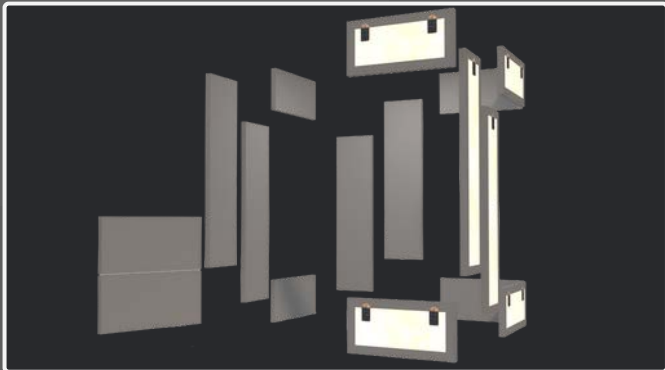
starting at **\$325**



AUDIMUTE FABRIC ACOUSTIC PANELS

Custom 2' x 4' panels available in 16 fabric colors, NRC .95 sound absorption, with Velcro tabs and screws for easy mounting.

\$86 each



ACOUSTIC PACKAGE

Audimute panels (1'x2', 1'x4', 2'x4') absorb sound and reduce echo for optimal acoustics. Each package includes a pre-determined panel count based on your booth model.

starting at **\$249**



LENRD BASS TRAPS

Affordable, effective LENRD bass traps control low frequencies for balanced acoustics, offering easy installation and superior performance.

2 pack—**\$120**

ACCESS & MOBILITY



ADA PACKAGE

Designed for accessibility with a 32" wide door, no-threshold entry, modular ramp, and raised floor.

starting at **\$2,545**



WIDE-ACCESS DOOR

Perfect for moving larger items or when a wider entrance is needed, the 32" wide door features a 16" x 48" window for better visibility.

starting at **\$517**



CASTER PLATE

The added wheels provide easy mobility and reduce downward noise with an air buffer. It raises the unit height by nearly 5".

starting at **\$435**



STEP

This accessory provides a smooth and easy transition in and out of the WhisperRoom when paired with the Caster Plate.

\$195 each

STRUCTURAL MODS



10"
|
|
|

10" HEIGHT EXTENSION

Ideal for applications requiring extra space. Check your room's ceiling height and request this upgrade when placing your initial order.

starting at **\$490**



WALL WINDOWS

Crafted with multi-layer laminated safety glass, these windows offer noise reduction, safety, and clear visibility. Available in 30", 36", 42", and 48" sizes, they include a cable passage plug and require specification at the time of order.

starting at **\$500**

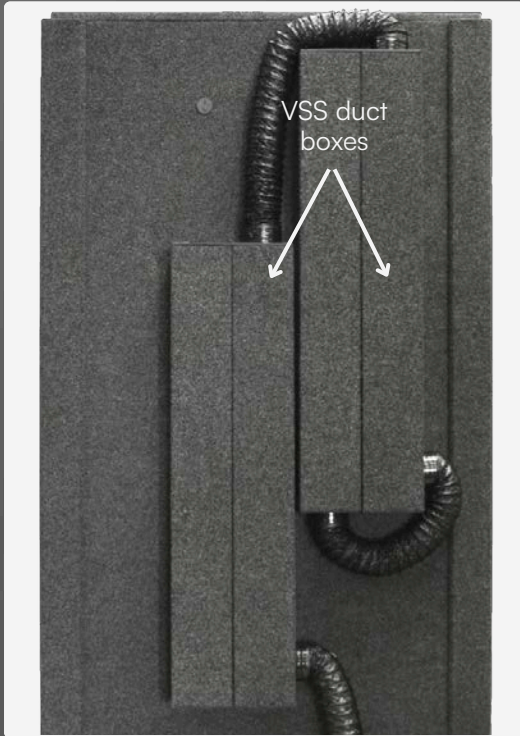


IEP FLOOR

A 5/16" duracoustic mat made from recycled rubber, included in Enhanced models and available for purchase with Standard rooms, providing added sound isolation.

starting at **\$105**

VENTILATION UPGRADES



VENTILATION SILENCING SYSTEM

Ventilation Systems are quiet, but a VSS reduces airflow noise further. Each vent system needs one VSS. Includes two exhaust ducts, hoses, and adapters. Available anytime.

starting at **\$645**



EXTERIOR FAN SILENCER

An Exterior Fan Silencer reduces noise from ventilation fans outside the WhisperRoom, providing extra sound control. The number needed depends on the model and can be added anytime.

starting at **\$250**



HEPA FILTER

Easily installs on any WhisperRoom vent set, keeping airflow healthy while blocking particles like viruses, bacteria, pollen, and mold for cleaner air. Includes additional replacement filter.

\$100 each

FUNCTIONAL ADD-ONS



OFFICE DESK

Available in 30" or 42" widths, each desk features two USB and two 120-volt outlets for convenience.

Made from red oak, it folds down easily with adjustable hinges to save space and can be installed inside or outside your WhisperRoom.

\$299 small
\$399 large

MULTI JACK PANEL (MJP)

Includes 2 USB jacks, 4 XLR jacks, and 6 — ¼" stereo phono jacks. Easily connect cables through a passage to the interior box. Ideal for audiometric and recording applications, it can be added after the booth is assembled.

\$795 each





01 Audiology



02 Recording



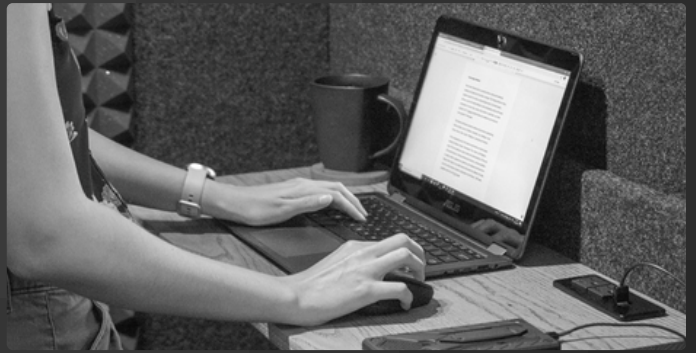
03 Practice



04 Voice-Over & Narration



05 Podcasting & Broadcasting



06 Office



07 Education & Institutions



08 Product Testing



WARRANTY & INFO

LIMITED 5-YEAR WARRANTY

WhisperRoom, Inc. provides a 5-year limited warranty, covering repairs or replacements of any factory-determined defective parts due to materials or workmanship. This warranty begins on the date of purchase and applies only to the original owner. It does not cover damage caused by shipping, accidents, misuse, vandalism, unauthorized alterations, or lack of proper care.

Note: Warranty is void if modifications are made to the product. The manufacturer reserves the right to make design adjustments.

FOR ASSISTANCE

Contact our Product Representatives:

- **Phone:** 865-558-5364 or 1-800-200-8168
- **Factory Address:** 116 South Sugar Hollow Road, Morristown, TN 37813

We're here to help with quotes, inquiries, or additional support.

ADDITIONAL INFO

- WhisperRooms are modular sound isolation enclosures designed to significantly reduce noise. They are not soundproof.
- Purchasers are responsible for complying with local building codes.
- WhisperRoom, Inc. strives to make every customer confident in their purchase before finalizing orders. If unforeseen circumstances arise, returns will be considered at the discretion of WhisperRoom, Inc.
- Models 5' x 5' (MDL 6060) and larger can expand in the second dimension with a model-specific Expansion Package. Contact us for details.